

Roll No																			
---------	--	--	--	--	--	--	--	--	--	--	--	--	--	--	--	--	--	--	--



**PRESIDENCY UNIVERSITY  
BENGALURU**

**SCHOOL OF DESIGN  
END TERM EXAMINATION - JAN 2023**

**Semester :** Semester V - 2020

**Course Code :** BDS303

**Course Name :** Sem V - BDS303 - Building Services II

**Program :** B. Design - SD

**Date :** 11-JAN-2023

**Time :** 9.30AM - 12.30PM

**Max Marks :** 100

**Weightage :** 50%

---

**Instructions:**

- (i) Read all questions carefully and answer accordingly.*
  - (ii) Question paper consists of 3 parts.*
  - (iii) Scientific and non-programmable calculator are permitted.*
- 

**PART-A**

**ANSWER ALL THE FOLLOWING QUESTIONS**

**3Q X 10M = 30M**

1. What is reverberance and echo? State any two differences between them.  
(CO1) [Knowledge]
2. What are the different types of acoustical surface treatments for spaces? Explain any one in detail.  
(CO2) [Knowledge]
3. Write a brief note on a fire-resistant material and where they are applied.  
(CO2) [Knowledge]

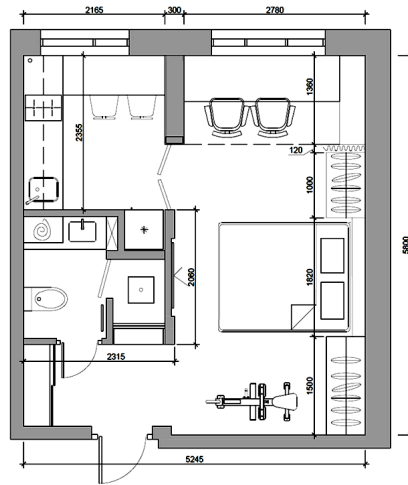
**PART-B**

**ANSWER ALL THE FOLLOWING QUESTIONS**

**2Q X 15M = 30M**

4. Explain different acoustical treatments that are used in the auditorium using a labelled diagram. Briefly explain any one material on how it serves the purpose acoustically.  
(CO2) [Comprehension]

5. Draw the interior lighting layout for the below space (All measurements in mm):



(CO2) [Comprehension]

### PART-C

VIVA / JURY

1 X 40M = 40M

6. Introduce the given topic and defend the jury clarifications.

(CO2) [Application]

\*\*\*\*\*